

제어기기 종합카탈로그



5PORT SOLENOID VALVE 5포트 에어파일럿 밸브 PKVA□00 시리즈 INDEX

사양	128
주문형식	128
내부구조도 및 주요부위의 재질	130
치수도	137

SVR10
SVA20
D-sub 커넥터
PKV
PNV
PV PLV
유체제어 밸브
앵글밸브
PCMP□
PCFA
PCFB
K□F
K□FW
PCJQ
PCJT
PCJQ2
PCJS
PCJK
PCGA
PCGB
PCGD
PGT□
PCGJ
PCG3
PCDA
PCDB
KCSS



주의

사용하기 전에 부록(前)-P.54의 「안전상의 주의」를 반드시 읽어 주십시오.

SVR10

SVA20

D-sub
커넥터

PKV

PNV

PV PLV

유체제어
밸브

영급밸브

PCM,PD

PCFA

PCFB

KDF

KDFW

PCJQ

PCJT

PCJQ2

PCJS

PCJK

PCGA

PCGB

PCGD

PGT□

PCGJ

PCG3

PCDA

PCDB

KCSS

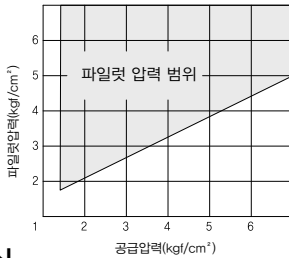
5포트 에어파일럿 밸브

PKVA

사양

항목	형식	PKVA	
사용유체		압축공기, 불활성 가스	
사용압력 MPa	2포지션	싱글	0.15~0.7
		더블	0.1~0.7
	3포지션		0.2~0.7
주위 및 사용유체온도	℃	최고 50	
파일럿압력범위 MPa	싱글	(0.7x사용압력+0.1)~0.7	
	더블	0.2~0.7	
급유		불필요	
수동 조작		Non Lock (누름식)	

상용 파일럿 압력 (에어파일럿 밸브)



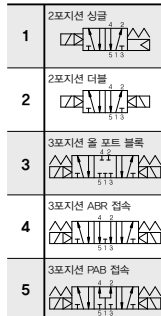
주문형식

PKVA 1 1 0 B - C4

본체형식
무기입 : 직접 배관형
B : 베이스 배관형

시리즈
1 : PKVA 100 (폭:10mm)
2 : PKVA 200 (폭:15mm)
3 : PKVA 300 (폭:18mm)

전환방식



배관접속구경 - 2(B), 4(A)

기호	배관접속구경	PKV 100	PKV 200	PKV 300
C4	∅4용 원터치 피팅	○	○	-
C6	∅6용 원터치 피팅	○	○	○
C8	∅8용 원터치 피팅	-	○	○
M5	M5 나사	○	-	-
O1	Rc(PT) 1/8	-	○	-
O2	Rc(PT) 1/4	-	-	○
-	서브 베이스 없음	○	○	○
O1	Rc(PT) 1/8	○	-	-
O2	Rc(PT) 1/4	-	○	-
O3	Rc(PT) 3/8	-	-	○

직접 배관형
베이스 배관형

직접 배관형

시리즈	전환방식	모델명	유효단면적 (Cv)	파일럿 접속구경	응답시간		중량 (g)	
							배이스 제외	배이스 포함
PKVA 100	2포지션 싱글	PKVA 110	6.0 mm ² (0.33) ^{*1}	M5X0.8P	M5X0.8	C4: Ø4 원터치피팅 C6: Ø6 원터치피팅 M5: M5 나사	18.4	
	2포지션 더블	PKVA 120					21.1	
	3포지션 올 포트 블록	PKVA 130	3.5 mm ² (0.2) ^{*1}				23.7	
	3포지션 ABR 접속	PKVA 140						
	3포지션 PAB 접속	PKVA 150						
PKVA 200	2포지션 싱글	PKVA 210	10.5 mm ² (0.58)		P(1)포트: Rc(PT)1/8 R(3.5)포트: Rc(PT)1/16	C4: Ø4 원터치피팅 C6: Ø6 원터치피팅 C8: Ø8 원터치피팅 Ø1: Rc1/8(PT)나사	43.2	
	2포지션 더블	PKVA 220	47.1					
	3포지션 올 포트 블록	PKVA 230	8.0 mm ² (0.44)		53.4			
	3포지션 ABR 접속	PKVA 240						
	3포지션 PAB 접속	PKVA 250						
PKVA 300	2포지션 싱글	PKVA 310	16.0 mm ² (0.9)	P(1)포트: Rc(PT)1/4 R(3.5)포트: Rc(PT)1/8	C6: Ø6 원터치피팅 C8: Ø8 원터치피팅 Ø2: Rc1/4(PT)나사	78.0		
	2포지션 더블	PKVA 320	85.3					
	3포지션 올 포트 블록	PKVA 330	13.5 mm ² (0.75)	93.3				
	3포지션 ABR 접속	PKVA 340						
	3포지션 PAB 접속	PKVA 350						

*1. 매니폴드에서 C6(Ø6용 원터치 피팅)을 사용할 때의 수치입니다.

베이스 배관형

시리즈	전환방식	모델명	유효단면적 (Cv)	파일럿 접속구경	배관접속구경	중량 (g)	
						배이스 제외	배이스 포함
PKVA 100B	2포지션 싱글	PKVA 110B	6.0 mm ² (0.33)	M5X0.8P	Rc(PT)1/8	17.3	
	2포지션 더블	PKVA 120B				20	
	3포지션 올 포트 블록	PKVA 130B	3.5 mm ² (0.2)			22.6	
	3포지션 ABR 접속	PKVA 140B				50.8	
	3포지션 PAB 접속	PKVA 150B					
PKVA 200B	2포지션 싱글	PKVA 210B	12.5 mm ² (0.7)		Rc(PT)1/4	41.0	
	2포지션 더블	PKVA 220B	44.9				
	3포지션 올 포트 블록	PKVA 230B	9 mm ² (0.5)		51.2		
	3포지션 ABR 접속	PKVA 240B			108.6		
	3포지션 PAB 접속	PKVA 250B					
PKVA 300B	2포지션 싱글	PKVA 310B	23.4 mm ² (1.3)	Rc(PT)3/8	71.2		
	2포지션 더블	PKVA 320B			78.5		
	3포지션 올 포트 블록	PKVA 330B	18 mm ² (0.1)		86.5		
	3포지션 ABR 접속	PKVA 340B			191.7		
	3포지션 PAB 접속	PKVA 350B					

SVR10
SVA20
D-sub 커넥터
PKV
PNV
PV PLV
유체제어 밸브
앵글밸브
PCM□
PCFA
PCFB
K□F
K□FW
PCJQ
PCJT
PCJQ2
PCJS
PCJK
PCGA
PCGB
PCGD
PGT □
PCGJ
PCG3
PCDA
PCDB
KCSS

SVR10

SVA20

D-sub
커넥터

PKV

PNV

PV PLV

유체제어
밸브

영글밸브

PCM, P□

PCFA

PCFB

K□F

K□FW

PCJQ

PCJT

PCJQ2

PCJS

PCJK

PCGA

PCGB

PCGD

PGT□

PCGJ

PCG3

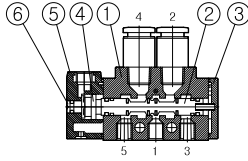
PCDA

PCDB

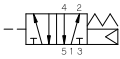
KCSS

내부구조도 및 주요 부위의 재질

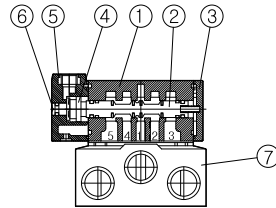
직접 배관형



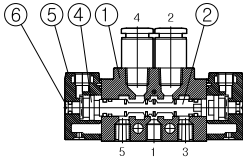
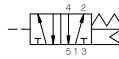
2포지션 싱글
PKVA 110



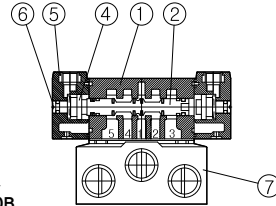
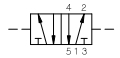
베이스 배관형



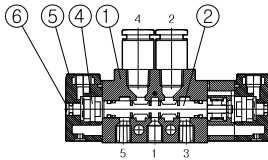
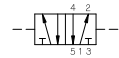
2포지션 싱글
PKVA 110B



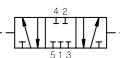
2포지션 더블
PKVA 120



2포지션 더블
PKVA 120B



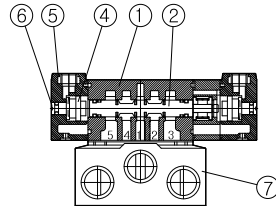
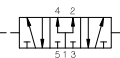
3포지션
올 포트 블록
PKVA 130



ABR 접속
PKVA 140



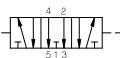
PAB 접속
PKVA 150



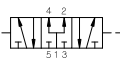
3포지션
올 포트 블록
PKVA 130B



ABR 접속
PKVA 140B



PAB 접속
PKVA 150B

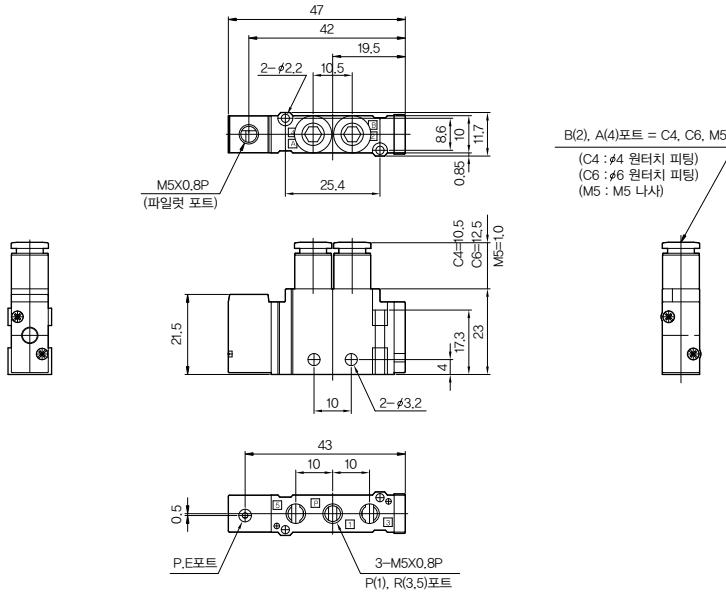


No.	명 칭	재 질
①	본체	ADC-12
②	스플	알루미늄 · 합성고무 (NBR)
③	엔드 커버	플라스틱
④	피스톤	플라스틱
⑤	어댑터	플라스틱
⑥	매뉴얼 버튼	SI
⑦	베이스	ADC-12

치수도 (mm)

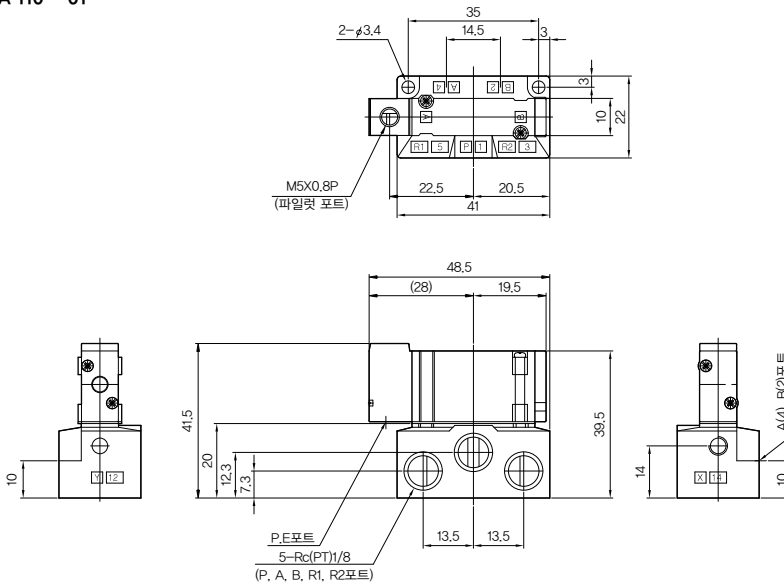
직접 배관형

PKVA 110 - □



베이스 배관형

PKVA 110 - 01



SVR10

SVA20

D-sub
커넥터

PKV

PNV

PV PLV

유체제어
밸브

앵글밸브

PCMP □

PCFA

PCFB

K□F

K□FW

PCJQ

PCJT

PCJQ2

PCJS

PCJK

PCGA

PCGB

PCGD

PGT □

PCGJ

PCG3

PCDA

PCDB

KCSS

SVR10

SVA20

D-sub
커넥터

PKV

PNV

PV PLV

유체제어
밸브

영광밸브

PCM, P□

PCFA

PCFB

K□F

K□FW

PCJQ

PCJT

PCJQ2

PCJS

PCJK

PCGA

PCGB

PCGD

PGT□

PCGJ

PCG3

PCDA

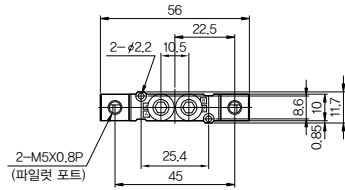
PCDB

KCSS

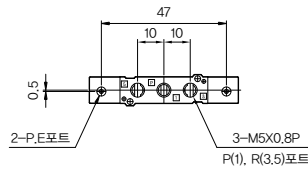
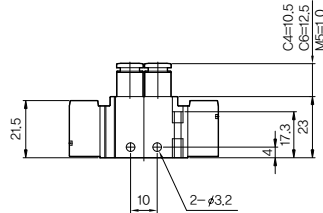
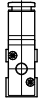
치수도 (mm)

직접 배관형

PKVA 120 - □

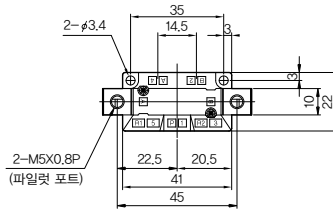
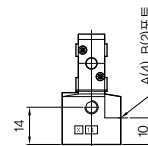
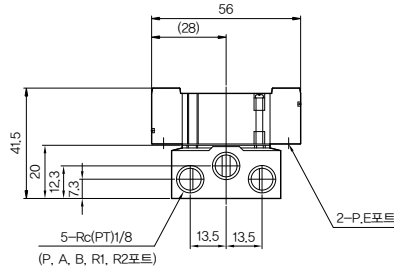
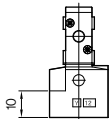
2-M5X0.8P
(파일럿 포트)

B(2), A(4)포트 = C4, C6, M5

(C4 : φ4 원타치 피팅)
(C6 : φ6 원타치 피팅)
(M5 : M5 나사)

베이스 배관형

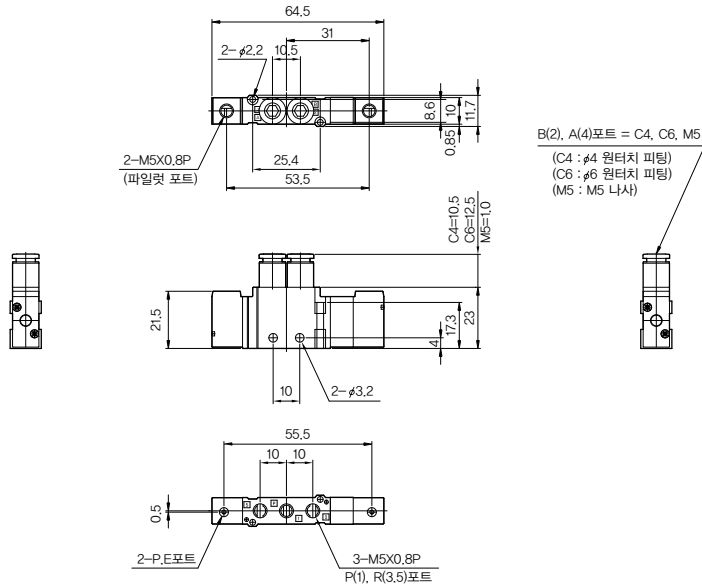
PKVA 120B - 01

2-M5X0.8P
(파일럿 포트)

치수도 (mm)

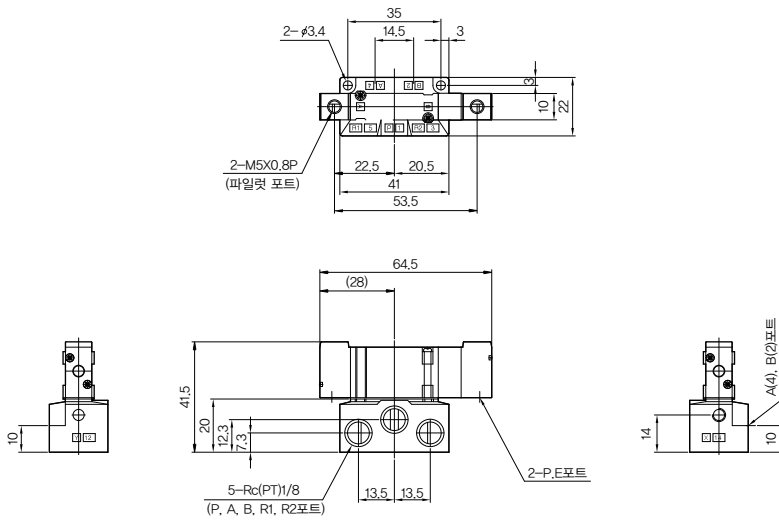
직접 배관형

PKVA 1□0 - □



베이스 배관형

PKVA 1□B - 01



SVR10

SVA20

D-sub 커넥터

PKV

PNV

PV PLV

유체제어 밸브

앵글밸브

PCMP□

PCFA

PCFB

K□F

K□FW

PCJQ

PCJT

PCJQ2

PCJS

PCJK

PCGA

PCGB

PCGD

PGT□

PCGJ

PCG3

PCDA

PCDB

KCSS

SVR10

SVA20

D-sub
커넥터

PKV

PNV

PV PLV

유체제어
밸브

영광밸브

PCM, P□

PCFA

PCFB

K□F

K□FW

PCJQ

PCJT

PCJQ2

PCJS

PCJK

PCGA

PCGB

PCGD

PGT□

PCGJ

PCG3

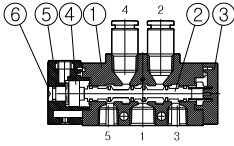
PCDA

PCDB

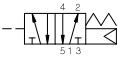
KCSS

내부구조도 및 주요 부위의 재질

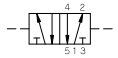
직접 배관형



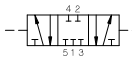
2포지션 싱글
PKVA 210



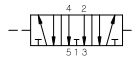
2포지션 더블
PKVA 220



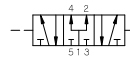
3포지션
올 포트 블록
PKVA 230



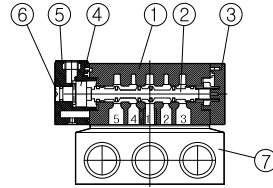
ABR 점속
PKVA 240



PAB 점속
PKVA 250



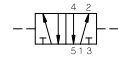
베이스 배관형



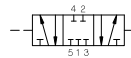
2포지션 싱글
PKVA 210B



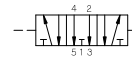
2포지션 더블
PKVA 220B



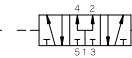
3포지션
올 포트 블록
PKVA 230B



ABR 점속
PKVA 240B



PAB 점속
PKVA 250B

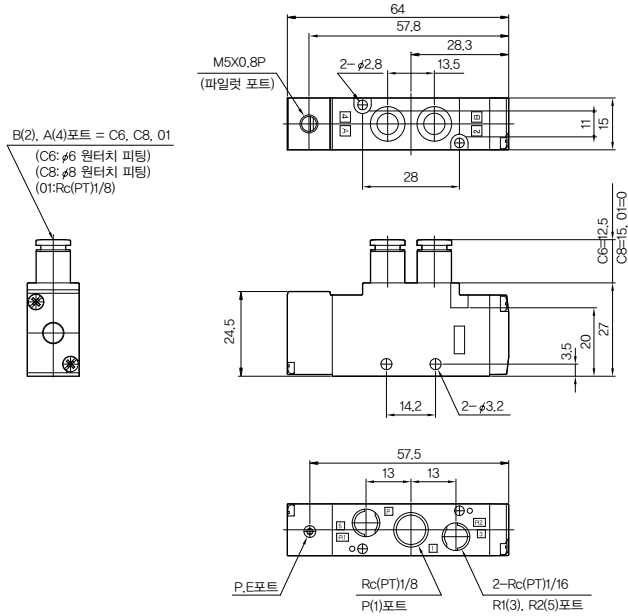


No.	명 칭	재 질
①	본체	ADC-12
②	스플	알루미늄 · 합성고무 (NBR)
③	엔드 커버	플라스틱
④	피스톤	플라스틱
⑤	어댑터	플라스틱
⑥	매뉴얼 버튼	알루미늄
⑦	베이스	ADC-12

치수도 (mm)

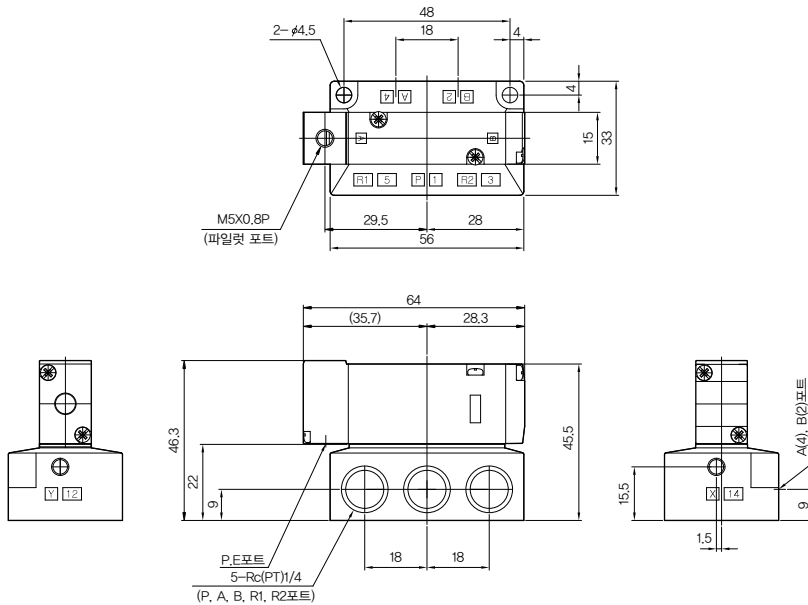
직접 배관형

PKVA 210 - □



베이스 배관형

PKVA 210B - 02



SVR10
SVA20
D-sub 커넥터
PKV
PNV
PV PLV
유체제어 밸브
앵글밸브
PCMP □
PCFA
PCFB
K□F
K□FW
PCJQ
PCJT
PCJQ2
PCJS
PCJK
PCGA
PCGB
PCGD
PGT □
PCGJ
PCG3
PCDA
PCDB
KCSS

SVR10

SVA20

D-sub
커넥터

PKV

PNV

PV PLV

유체제어
밸브

영광밸브

PCM, P□

PCFA

PCFB

KCIF

KCIFW

PCJQ

PCJT

PCJQ2

PCJS

PCJK

PCGA

PCGB

PCGD

PGT□

PCGJ

PCG3

PCDA

PCDB

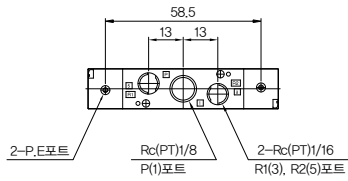
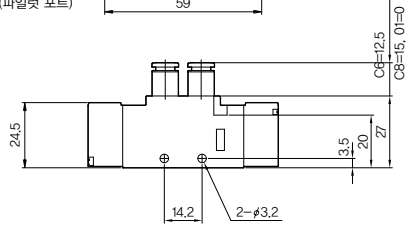
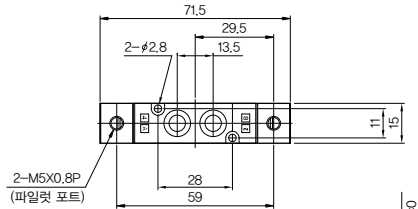
KCSS

치수도 (mm)

직접 배관형

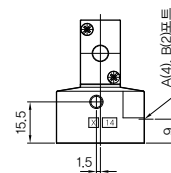
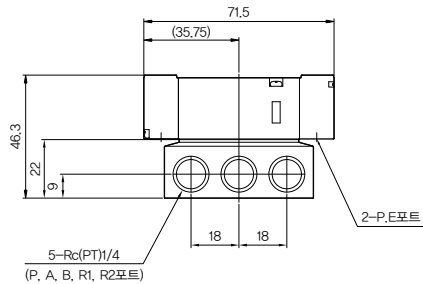
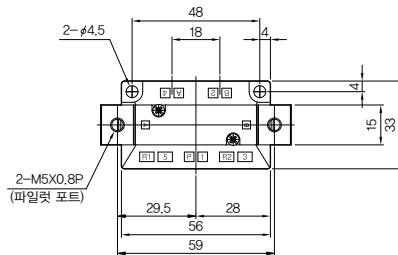
PKVA 220 - □

B(2), A(4)포트 = C6, C8, O1
(C6 : φ6 원타치 파팅)
(C8 : φ8 원타치 파팅)
(O1 : Rc(PT)1/8)



베이스 배관형

PKVA 220B - O2

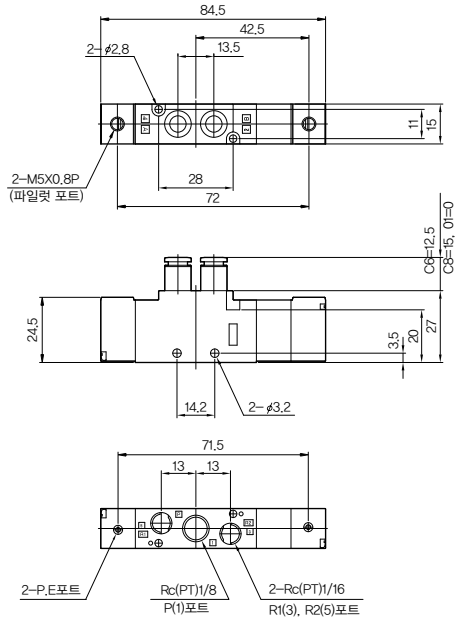
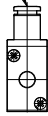


치수도 (mm)

직접 배관형

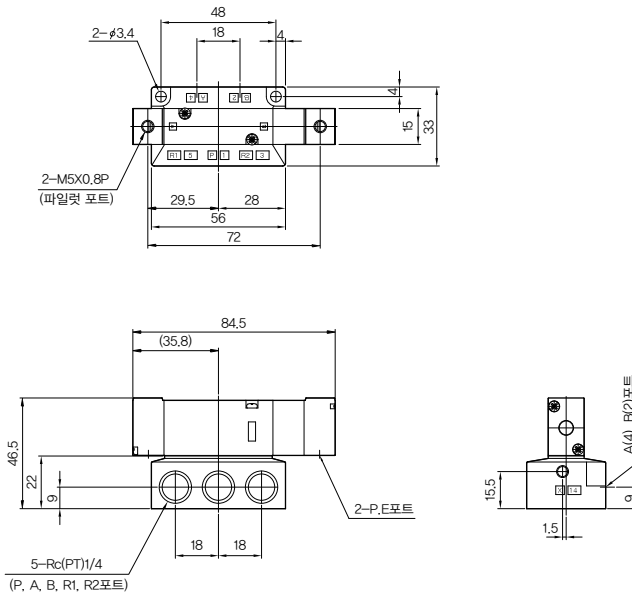
PKVA 2□0 - □

B(2), A(4)포트 = C6, C8, O1
 (C6 : #6 원타치 피팅)
 (C8 : #8 원타치 피팅)
 (O1 : Rc(PT)1/8)



베이스 배관형

PKVA 2□0B - 02



SVR10
SVA20
D-sub 커넥터
PKV
PNV
PV PLV
유체제어 밸브
앵글밸브
PCMP□
PCFA
PCFB
K□F
K□FW
PCJQ
PCJT
PCJQ2
PCJS
PCJK
PCGA
PCGB
PCGD
PGT□
PCGJ
PCG3
PCDA
PCDB
KCSS

SVR10

SVA20

D-sub
커넥터

PKV

PNV

PV PLV

유체제어
밸브

양극밸브

PCM□□

PCFA

PCFB

K□F

K□FW

PCJ□

PCJT

PCJQ2

PCJS

PCJK

PCGA

PCGB

PCGD

PGT□

PCGJ

PCG3

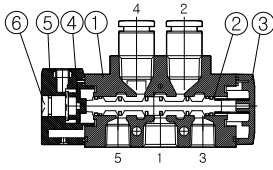
PCDA

PCDB

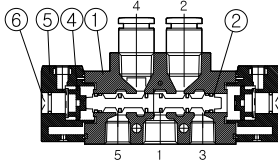
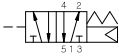
KCSS

내부구조도 및 주요 부위의 재질

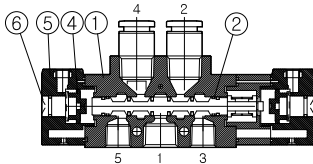
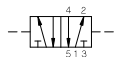
직접 배관형



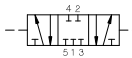
2포션 싱글
PKVA 310



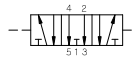
2포지션 더블
PKVA 320



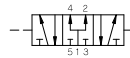
3포지션
올 포트 블록
PKVA 330



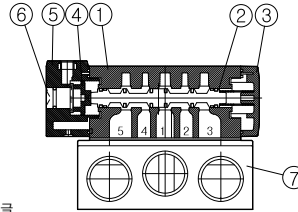
ABR 접속
PKVA 340



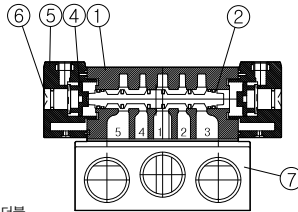
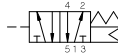
PAB 접속
PKVA 350



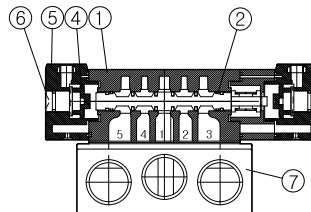
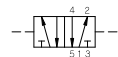
베이스 배관형



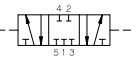
2포션 싱글
PKVA 310B



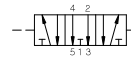
2포지션 더블
PKVA 320B



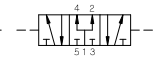
3포지션
올 포트 블록
PKVA 330B



ABR 접속
PKVA 340B



PAB 접속
PKVA 350B



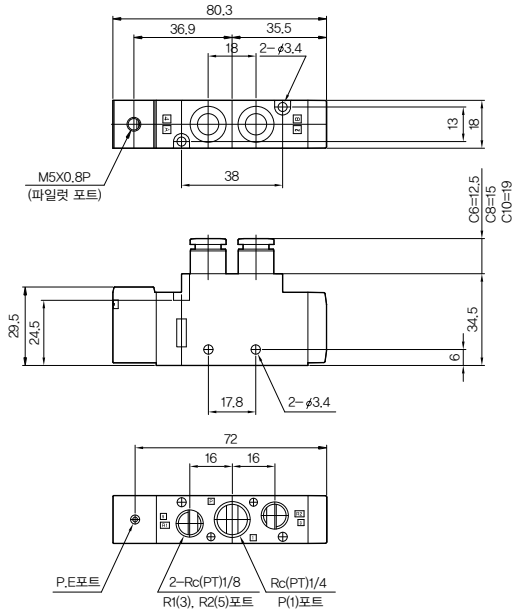
No.	명 칭	재 질
①	본체	ADC-12
②	스플	알루미늄 · 합성고무(NBR)
③	엔드 커버	플라스틱
④	피스톤	플라스틱
⑤	어댑터	플라스틱
⑥	매뉴얼 버튼	알루미늄
⑦	베이스	ADC-12

치수도 (mm)

직접 배관형

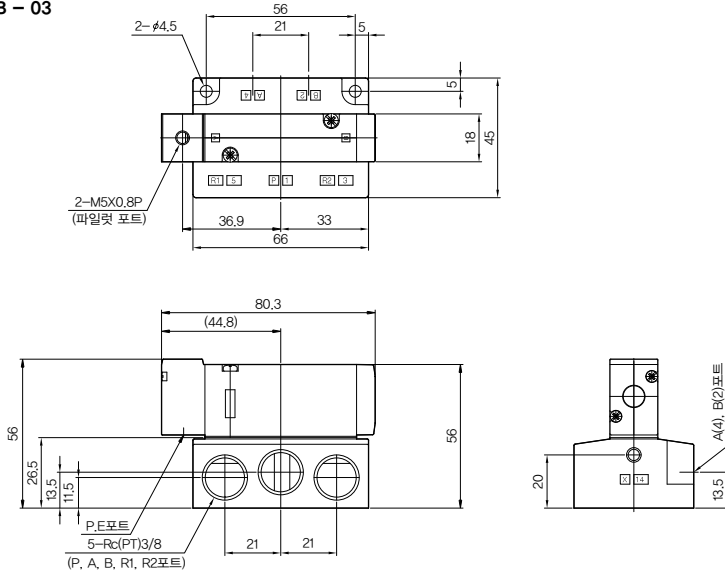
PKVA 310 - □

B(2), A(4)포트 = C6, C8, C10, O2
 (C6 : $\phi 6$ 원타치 피팅)
 (C8 : $\phi 8$ 원타치 피팅)
 (C10 : $\phi 10$ 원타치 피팅)
 (O2 : Rc(PT)1/4)



베이스 배관형

PKVA 310B - 03



SVR10

SVA20

D-sub
커넥터

PKV

PNV

PV PLV

유체제어
밸브

앵글밸브

PCMP □

PCFA

PCFB

K □ F

K □ FW

PCJQ

PCJT

PCJQ2

PCJS

PCJK

PCGA

PCGB

PCGD

PGT □

PCGJ

PCG3

PCDA

PCDB

KCSS

SVR10

SVA20

D-sub
커넥터

PKV

PNV

PV PLV

유체제어
밸브

영광밸브

PCM, P□

PCFA

PCFB

K□F

K□FW

PCJQ

PCJT

PCJQ2

PCJS

PCJK

PCGA

PCGB

PCGD

PGT□

PCGJ

PCG3

PCDA

PCDB

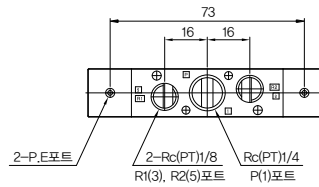
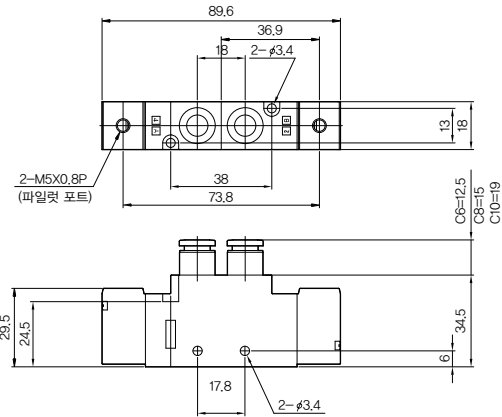
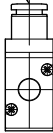
KCSS

치수도 (mm)

직접 배관형

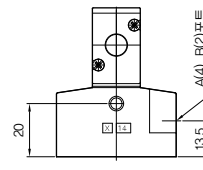
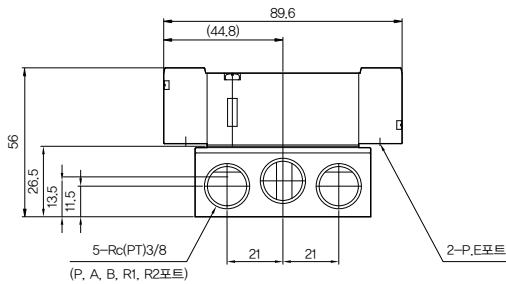
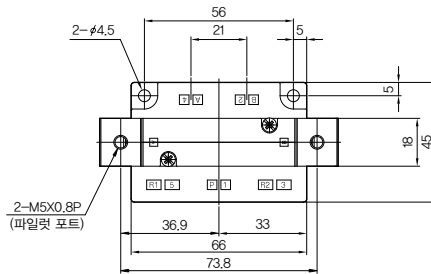
PKVA 320 - □

B(2), A(4)포트 = C6, C8, C10, O2
(C6 : $\phi 6$ 원터치 피팅)
(C8 : $\phi 8$ 원터치 피팅)
(C10 : $\phi 10$ 원터치 피팅)
(O2 : Rc(PT)1/4)



베이스 배관형

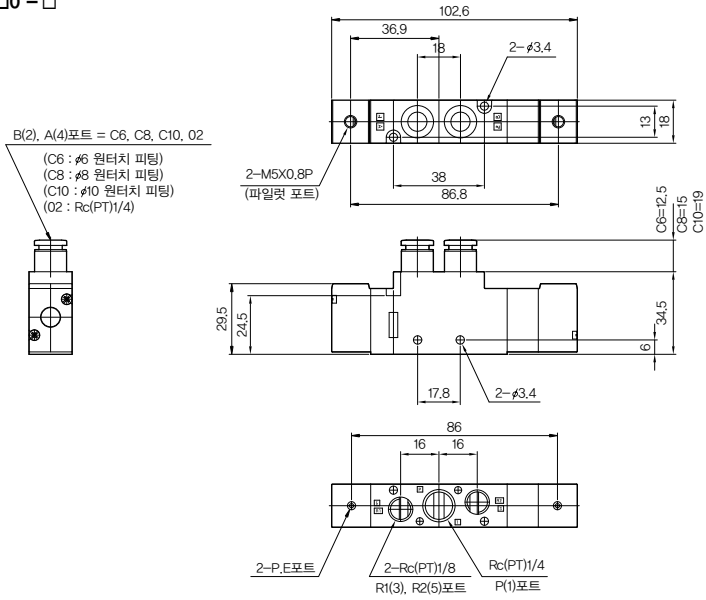
PKVA 320B - 03



치수도 (mm)

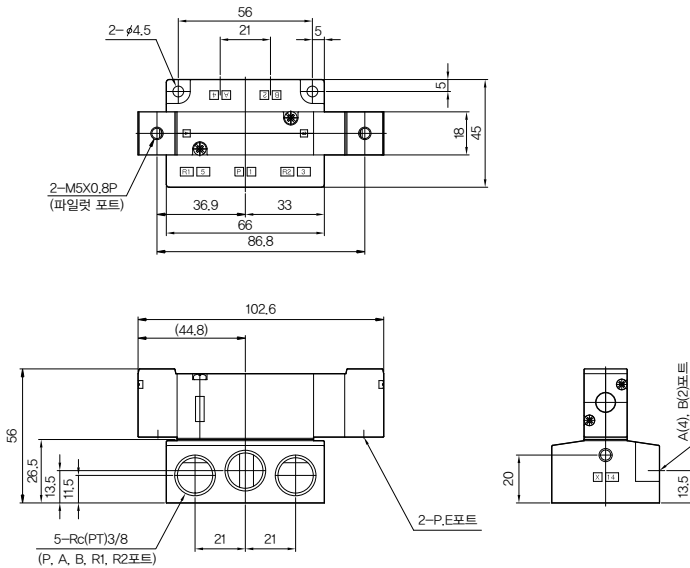
직접 배관형

PKVA 3□0 - □



베이스 배관형

PKVA 3□0B - 03



SVR10

SVA20

D-sub
커넥터

PKV

PNV

PV PLV

유체제어
밸브

앵글밸브

PCMP□

PCFA

PCFB

K□F

K□FW

PCJQ

PCJT

PCJQ2

PCJS

PCJK

PCGA

PCGB

PCGD

PGT□

PCGJ

PCG3

PCDA

PCDB

KCSS

SVR10
SVA20
D-sub 커넥터
PKV
PNV
PV PLV
유체제어 밸브
앵글밸브
PCM, P□
PCFA
PCFB
K□F
K□FW
PCJQ
PCJT
PCJQ2
PCJS
PCJK
PCGA
PCGB
PCGD
PGT□
PCGJ
PCG3
PCDA
PCDB
KCSS