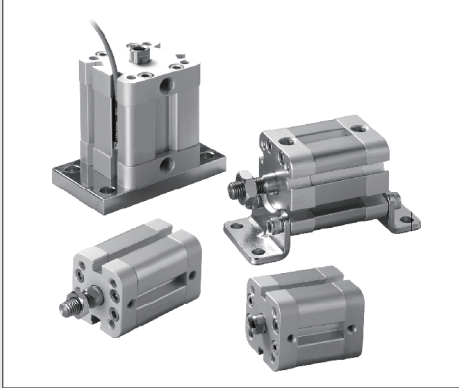


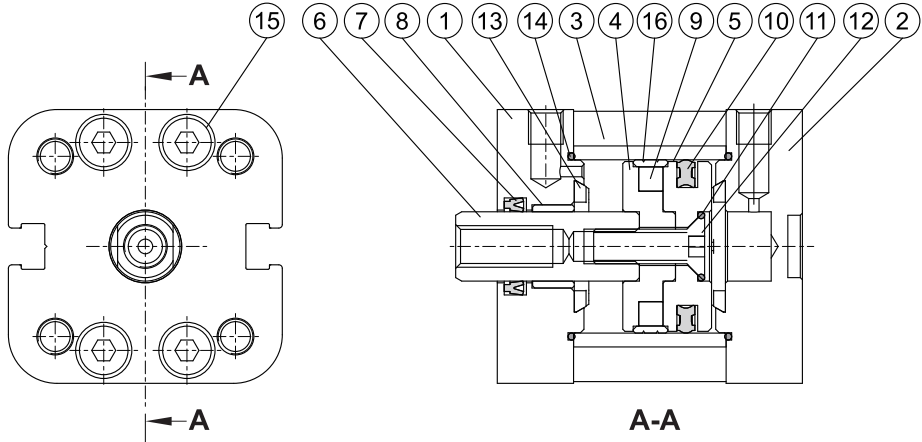
구동기기 종합카탈로그



COMPACT CYLINDER SERIES 콤팩트 실린더 시리즈 INDEX

사양 및 주문형식	2
센서스위치 취부방법	2
내부구조도	3
각 부위의 명칭 및 주요 부위의 재질	3
교환부품 및 실린더 중량	4
실린더 액세서리	5
치수도	6

내부구조도



각 부위의 명칭 및 주요 부위의 재질





No.	명 칭	재 질	수량	구성 부품 (포함)	교환 부품 (포함)
1	로드 커버	알루미늄합금	1	●	
2	엔드 커버	알루미늄합금	1	●	
3	튜브	알루미늄합금	1		
4	피스톤-R	알루미늄합금	1	●	
5	피스톤-H	알루미늄합금	1	●	
6	피스톤 로드	카본 스틸	1		
7	로드 패킹	NBR	1	●	●
8	부시	합금동	1	●	
9	마그네틱 링	마그넷	1	●	
10	피스톤 패킹	NBR	1	●	●
11	O-RING	NBR	1	●	●
12	볼트	카본 스틸	1	●	
13	로드 쿠션	NBR	2	●	●
14	O-RING	NBR	2	●	●
15	볼트	스테인리스강	8	●	
16	웨어 링	테프론	1	●	

교환부품

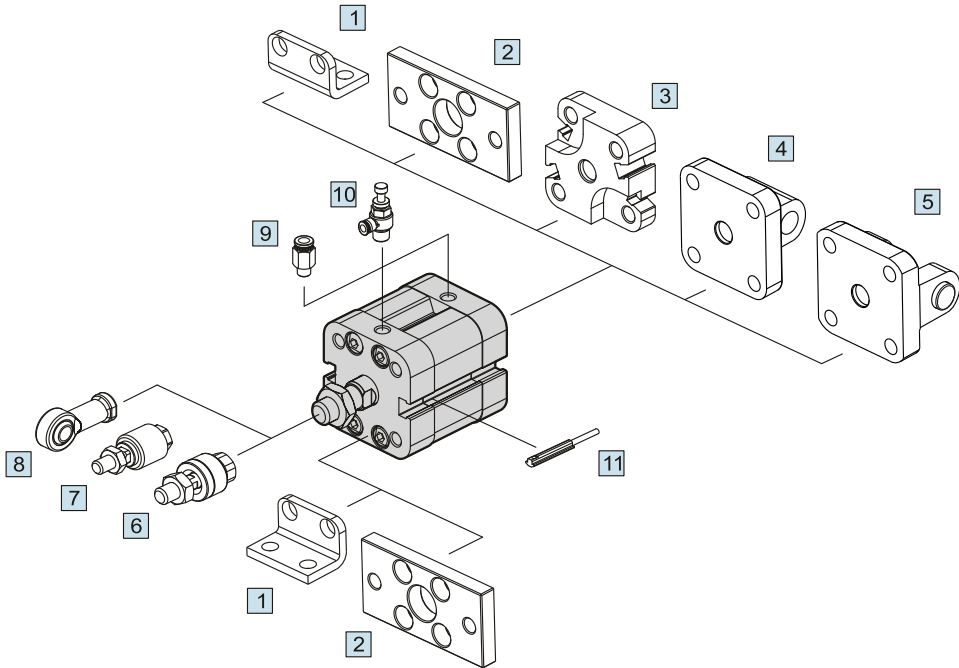
실린더경	구성 부품	교환 부품
φ 20	CP-PCJI-20	PS-PCJI-20
φ 25	CP-PCJI-25	PS-PCJI-25
φ 32	CP-PCJI-32	PS-PCJI-32
φ 40	CP-PCJI-40	PS-PCJI-40
φ 50	CP-PCJI-50	PS-PCJI-50
φ 63	CP-PCJI-63	PS-PCJI-63
φ 80	CP-PCJI-80	PS-PCJI-80

실린더 중량

단위 : g

타입	Basic weight PCJI-11	Stroke 10 mm PCJI-11	Basic weight PCJI-12	Stroke 10 mm PCJI-12
실린더경				
φ 20	121	14	108	14
φ 25	147	18	135	18
φ 32	238	24	214	24
φ 40	322	32	291	32
φ 50	493	46	455	46
φ 63	703	48	667	48
φ 80	1,260	76	1,190	76

실린더 액세서리

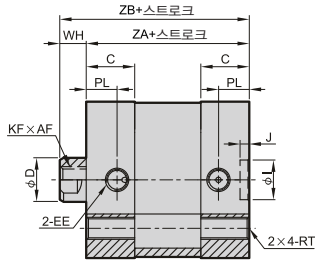
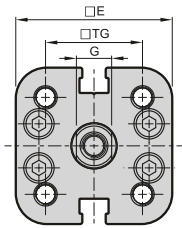


액세서리 형식 및 명칭

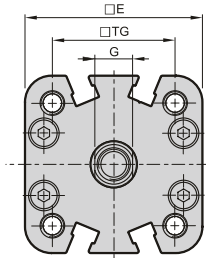
No.	형 식	명 칭
1	LB	붓 마운트
2	FAC FBC	로드측 플랜지 마운트 / 헤드측 플랜지 마운트
3	MP	
4	CA	
5	CB + PIN	클레비스 마운트 + 핀
6	MFC	
7	MFCS	
8	PHS	
9	PC	
10	JSC	
11	RCI	

치수도 (mm)

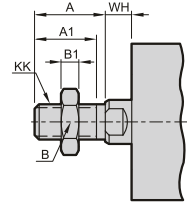
φ 20, φ 25



φ 32~ φ 80



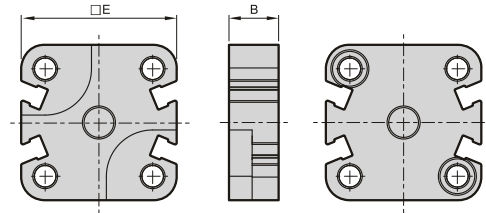
PCJI-11
복동형 / 수나사



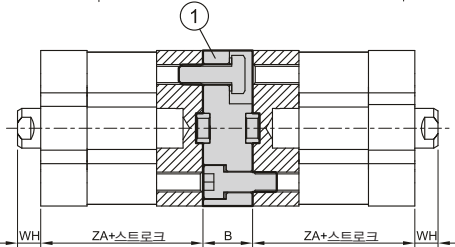
기호 실린더경	A	A1	B	B1	KK
20	16	14	13	4	M8×1.25
25	16	14	13	4	M8×1.25
32	19	17	17	5	M10×1.25
40	19	17	17	5	M10×1.25
50	22	20	19	6	M12×1.25
63	22	20	19	6	M12×1.25
80	28	26	24	8	M16×1.5

기호 실린더경	AF	C	D	E	EE	G	WH	I	J	KF	PL	TG	RT	ZA	ZB
20	14	11	10	35.5	M5×0.8	8	6	9	2.1	M6×1.0	7	22	M5×0.8	37	43
25	14	11	10	39.5	M5×0.8	8	6	9	2.1	M6×1.0	7	26	M5×0.8	39	45
32	15	14	12	47	G 1/8	10	7	9	2.1	M8×1.25	7.5	32.5	M6×1.0	44	51
40	15	14	12	54.5	G 1/8	10	7	9	2.1	M8×1.25	7.5	38	M6×1.0	45	52
50	18	14	16	65.5	G 1/8	14	8	12	2.6	M10×1.5	7.5	46.5	M8×1.25	45	53
63	18	14.5	16	75.5	G 1/8	14	8	12	2.6	M10×1.5	7.5	56.5	M8×1.25	49	57
80	20	15.5	20	95.5	G 1/8	17	10	12	2.6	M12×1.75	8	72	M10×1.5	54	64

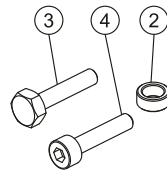
MP



기호 실린더경	B	E	WH	ZA	최대 스트로크
20	13	35.5	6	37	600 mm
25	13	39.5	6	39	600 mm
32	15	47	7	44	800 mm
40	15	54.5	7	45	800 mm
50	15	65.5	8	45	800 mm
63	15	75.5	8	49	800 mm
80	17	95.5	10	54	1000 mm

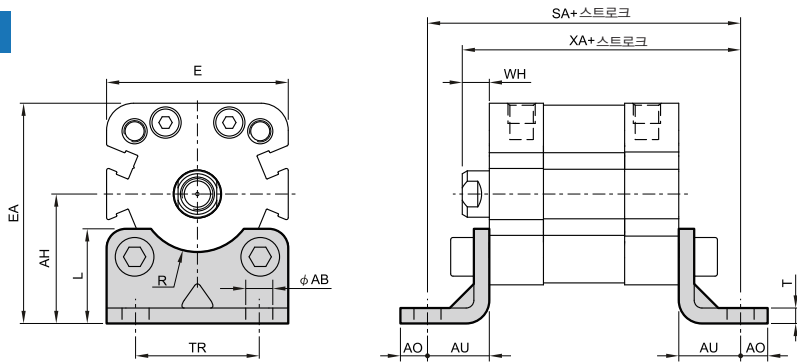


No.	품명	수량
1	커넥션 블록	1
2	플랜지	2
3	볼트	2
4	볼트	2



치수도 (mm)

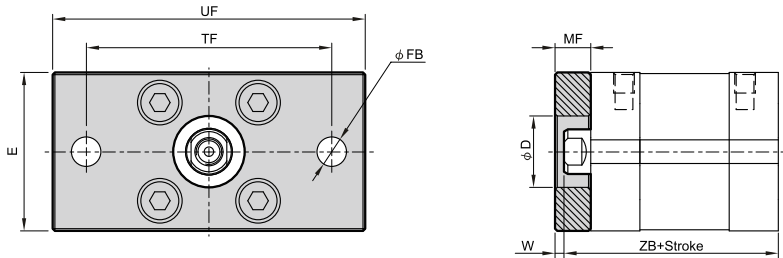
LB



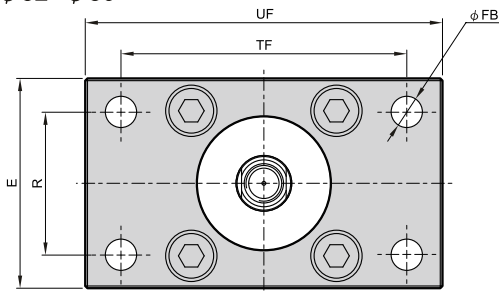
기종 실린더경	AB	AH	AO	AU	E	EA	L	R	SA	T	TR	WH	XA
20	7	27	7	16	35.5	44.8	21	—	69	4	22	6	59
25	7	29	7	16	39.5	48.8	22	—	71	4	26	6	61
32	7	33.5	7	16	47	57	24.5	15	76	4	32	7	67
40	10	38	9	18	54.5	65.3	26	17.5	81	4	36	7	70
50	10	45	9	21	65.5	77.8	31	20	87	5	45	8	74
63	10	50	9	21	75.5	87.8	31	22.5	91	5	50	8	78
80	12	63	1	26	95.5	110.8	40	—	106	6	63	10	90

FAC

ϕ 20~ ϕ 25



ϕ 32~ ϕ 80

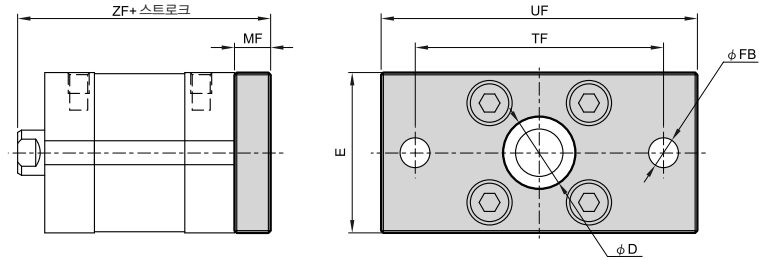


기종 실린더경	D	E	FB	MF	R	TF	UF	W	ZB
20	16	35.5	6.6	8	—	55	70	2	43
25	16	39.5	6.6	8	—	60	76	2	45
32	30	47	7	10	32	64	80	3	51
40	35	54.5	9	10	36	72	90	3	52
50	40	65.5	9	12	45	90	110	4	53
63	45	75.5	9	12	50	100	120	4	57
80	45	95.5	12	16	63	126	150	6	64

치수도 (mm)

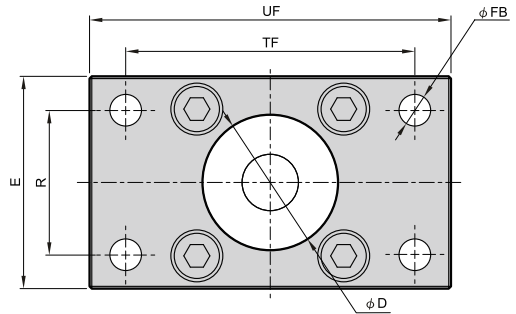
FBC

φ 20~φ 25

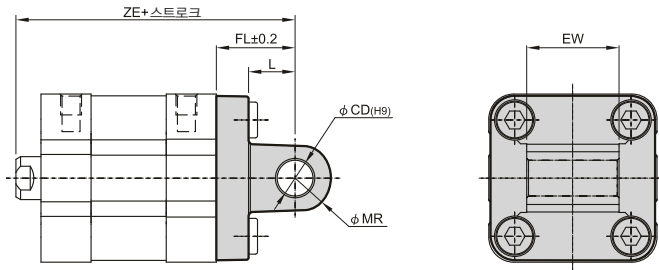


φ 32~φ 80

기준 실린더경	D	E	FB	MF	R	TF	UF	ZF
20	16	35.5	6.6	8	—	55	70	51
25	16	39.5	6.6	8	—	60	76	53
32	30	47	7	10	32	64	80	61
40	35	54.5	9	10	36	72	90	62
50	40	65.5	9	12	45	90	110	65
63	45	75.5	9	12	50	100	120	69
80	45	95.5	12	16	63	126	150	80



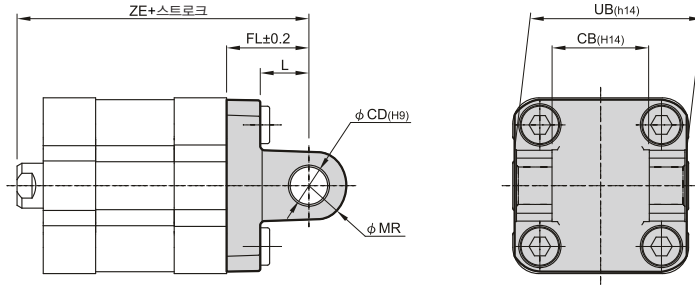
CA



기준 실린더경	CD	EW	FL	L	MR	ZE
20	8	16 h12	20	14	8	63
25	8	16 h12	20	14	8	65
32	10	25.8 ⁺⁰ _{-0.4}	22	13	10	73
40	12	27.8 ⁺⁰ _{-0.4}	25	16	12	77
50	12	31.8 ⁺⁰ _{-0.4}	27	16	12	80
63	16	39.8 ⁺⁰ _{-0.4}	32	21	16	89
80	16	49.8 ⁺⁰ _{-0.4}	36	22	16	100

치수도 (mm)

CB



기준 실린더경	CB	CD	FL	L	MR	UB	ZE
32	26	10	22	13	10	45	73
40	28	12	25	16	12	52	77
50	32	12	27	16	12	60	80
63	40	16	32	21	16	70	89
80	50	16	36	22	16	90	100

* 실린더경 φ 20, 25에 CB 타입은 대응하지 않습니다.

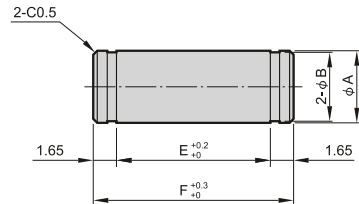
클레비스 마운트 샤프트 주문형식

PIN – PCJI – 32 – CB – P

실린더경

P : 스플릿 핀

CB : 클레비스 마운트



기준 실린더경	A(e8)	B	E	F	스플릿
32	10	9.6	45.2	50.5	STW-10
40	12	11.5	52.2	57.5	STW-12
50	12	11.5	60.2	65.5	STW-12
63	16	15.2	70.2	75.5	STW-16
80	16	15.2	90.2	95.5	STW-16